

BusFinder		
Model	BF6264B	
Power	Power Source	12V Power adapter
	Static Power Consumption	18W
	Max Power Consumption	45W
Hardware Interface	USB 3.0	
Timing Analysis (Asynchronous, Max. Sample Rate)	2.4GHz	
State Clock Rate (Synchronous, External Clock)	250MHz	
Storage	Conventional Timing, Transitional Timing	
Channels (Data / Clock)	64/4	
Total Sample Memory	32 Gb	
Timing vs. Channels	Timing Analysis	Channels for Conventional / Transitional Timing - Memory per channel
Memory	2.4 / 2GHz	32/28 - 1Gb
	1GHz	64/56 - 500Mb
Trigger	500 / 250 / 200MHz	64/64 - 500Mb
	Resolution	416 ps
	Channels	64
	States	8
Input Voltage	Events	8
	Pre / Post / Delay	Yes
	Pass Counter	Yes (1 ~ 1000000 times)
	Types	Channel, Pattern, Single / Multi Level, Width, Time-out, External
Impedance	Bus (by option)	eMMC 5.1, NAND Flash, SD 3.0, Serial Flash (SPI NAND), SPI
	Maximum	See Protocol Option
Temperature	Sensitivity	See Protocol Option
	Operating / Storage	5°C~45°C (41°F~113°F)/-10°C~65°C (14°F~149°F)
I/O port	Channel to channel skew	< 500 ps
	Trig-In	TTL 3.3V level (Rising / Falling)
	Trigger pulse approval	> 8ns
	Trig-Out	TTL 3.3V
	Ref. Clock Input	10MHz, Vpp=3.3 to 5V
	Ref. Clock Output	10MHz, TTL3.3V
	Connector type	MCX jack/female
Protocol Option (H/W, S/W)	eMMC 5.1	Yes
	NAND Flash	Yes
	SD 3.0	Yes
	SD 4.1	Yes (SD 3.0 included)
	Zoom In / Out	Yes
Software Features	Languages	English / Traditional Chinese / Simplified Chinese
	Waveform Height	Adjustable
	Zoom / Report Window	Yes
	Quick Cursor-positioning	Yes
	Import Label(s)	Yes
	Quick Bus Decode Setup	Yes
	Trigger / Auxiliary cursors	1/25
	Bus Decode	eMMC 5.1, NAND Flash, SD 3.0, Serial Flash (SPI NAND), SPI
Dimension	L x W x H	270 x 175 x 55 (mm ³)
Weight	See Protocol Option	

Acute BusFinder

Logic Analyzer & Protocol Analyzer



270 x 175 x 55 (mm³)

- PC-based, 64 channels
- USB 3.0 interface, 12V power adaptor
- 32Gb total memory

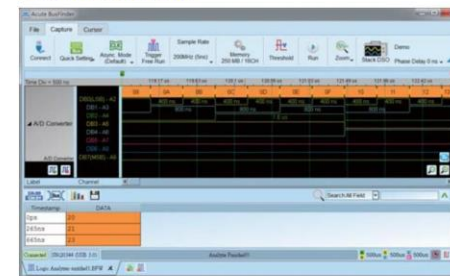
Protocol Analyzer: eMMC 5.1, NAND Flash, SD 3.0, SD 4.1 (UHS-II)

- Real-time data display, post-capture waveforms
- Trigger for commands or data
- Different active probes for different protocols for easier connections
- Filter data to save more commands
- Hide data for easy reading
- Search data for quick finding
- Statistics for commands and data
- Two voltage detects to find design bugs from voltage drop
- Use PC hard disk (SSD) to log long time data
- Protocol monitor like dash camera for long time surveillance (months)

Logic Analyzer: eMMC 5.1, NAND Flash, SD 3.0, Serial Flash (SPI NAND), SPI

- 2.4GHz timing analysis
- 8-state flow chart bus triggers
- Bus decodes with waveforms
- Stacks with a DSO to form as an MSO

Software Window



System Requirements

- USB 3.0 port
- Win 7, Win 8, Win 10 (64 bit)
- PC RAM 16GB (recommended) or 8GB at least



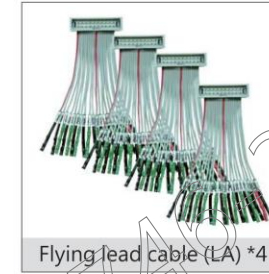
BusFinder

Device weight : 800g, Accessories weight : 1216g



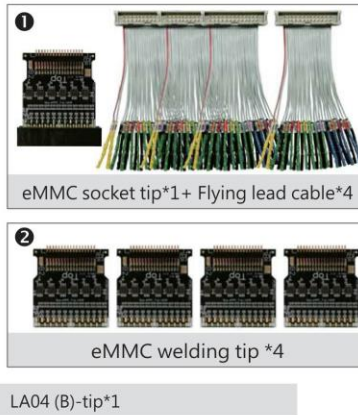
LA Probe x2

weight : 410g



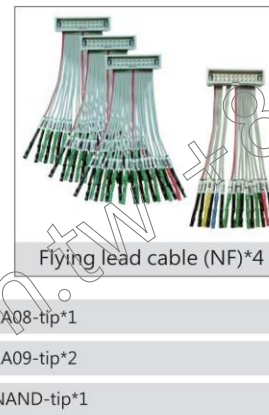
eMMC 5.1 Option

weight: 300g



NAND Flash Option

weight: 226g



SD3.0 Option

weight: 135g



SD 4.1 Option

weight: 420g

SD 4.1 Probe



uSD 4.1 Probe



Tip specification

Model	LA08/09	LA04 (B)	NAND	eMMC, SD 3.0	SD 4.1, uSD 4.1
Number of Channels	8 / 8+1 (Data+CLK)	4 (Data)	4+2 (Data+Analog)	12+2 (Data+Analog)	6-SE / 3-Diff / 2 (SD3.0 / SD4.1 / Analog)
Threshold of Data	Range	-0.5V ~ +4.8V		0V ~ +3.3V	
	Resolution	21mV			
	Accuracy	±100mV + 5%Vth			
Input Voltage of Data	Maximum (Non-destructive)	±15V DC+AC peak		-0.5V ~ +5V DC+AC peak	
	Operation	-1V ~ 8V		0V ~ 3.3V	
	Sensitivity	~300mV		~150mV	
Impedance of Data	1MΩ 5pF		500kΩ 2pF		500kΩ 2pF
	Maximum (Non-destructive)	-0.5V ~ +8V DC+AC peak			
Input Voltage of Analog	Operation	0V ~ 4V			
	Resolution	~1mV			
	Sampling Rate	1M			
Impedance of analog	1MΩ 100pF				

*SE: Single Ended, Diff: Differential Pair

宥億企業股份有限公司

YO IE ENTERPRISE CORP., LTD

Tel: +886-2-7746-3368
Fax: +886-2-2999-1178

E-mail: sales@yoie.com.tw
Web: www.yoie.com.tw

New Taipei City 241, Taiwan

地址: 241 新北市三重區重新路五段 609 巷 16 號 8 樓之 10

Add: 8F.-10, No.16, Ln. 609, Sec. 5, Chongxin Rd., Sanzhong Dist.,



免責聲明 資料僅供參考，若有與原廠不合之處，請以原廠規格為準，且不供任何證明文件之用