

## TECHNICAL DATA

# TiS75, TiS65, TiS60, TiS55, TiS50, TiS45, TiS40, TiS20 and TiS10 Infrared Cameras

## The Fluke Performance Series



Fluke Connect®  
compatible

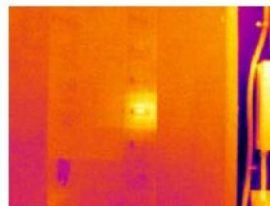
### Rugged. Accurate. Built to perform.

- Save time - wirelessly sync images directly from your camera to the **Fluke Connect® system**, and attach to an asset record or work order. Having access to maintenance records simultaneously at the inspection site and from the office or an off-site location enables faster decision making and real time collaboration between team members
- Get the context of the visual and infrared details all in one precisely blended or picture-in-picture image with **IR-Fusion® technology**
- Get precisely focused images from as close as 15 cm (6 in) with **manual focus**, or choose **fixed focus** for faster images without the need to focus from 45 cm (1.5 ft) and beyond
- Monitor your battery charge and avoid an unexpected loss of power with the **smart battery** with LED charge indicator
- Get easy access to saved images with a **removable SD card**
- Digitally document critical information such as the location of the equipment or the motor nameplate with the infrared image using **IR-PhotoNotes™** or **voice annotation\***

### GOOD IMAGE QUALITY WITH UP TO 320 X 240 RESOLUTION

| RESOLUTION                                | FIELD OF VIEW     |
|---|-------------------|
| <b>TiS75</b><br>320 x 240<br>D:S 504:1    | 35.7 °H x 26.8 °V |
| <b>TiS65/60</b><br>260 x 195<br>D:S 409:1 |                   |
| <b>TiS55/50</b><br>220 x 165<br>D:S 346:1 |                   |
| <b>TiS45/40</b><br>160 x 120<br>D:S 252:1 |                   |
| <b>TiS20</b><br>120 x 90<br>D:S 189:1     |                   |
| <b>TiS10</b><br>80 x 60<br>D:S 126:1      |                   |

See the problem and location in one image with IR-Fusion® technology.



Full infrared



50% blending, picture-in-picture mode



50% blending

\*Varies by model



## Detailed specifications

|  | TiS75   | TiS65/TiS60  | TiS55/TiS50  |  | TiS45/TiS40  |  | TiS20  | TiS10  |
|--|---|--|--|--|--|--|--|--|
| <b>Key features</b>                            |   |  |  |  |  |  |  |  |
| <b>IFOV (spatial resolution)</b>               | 2.0 mRad  | 2.4 mRad   | 2.8 mRad   |  | 3.9 mRad   |  | 5.2 mRad   | 7.8 mRad   |
| Detector resolution                            | 320 x 240 (76,800 pixels)   | 260 x 195 (50,700 pixels)                          | 220 x 165 (36,300 pixels)                          |  | 160 x 120 (19,200 pixels)                          |  | 120 x 90 (10,800 pixels)   | 80 x 60 (4,800 pixels)   |
| Field of view                                  | 35.7 °H x 26.8 °V   |  |  |  |  |  |  |  |
| Distance to spot                               | 504:1   | 409:1  | 346:1  |  | 252:1  |  | 189:1  | 126:1  |
| Focus system                                   | Manual focus, minimum focus distance 15 cm (~6 in)  | Fixed focus, minimum focus distance 45 cm (~18 in) | Manual focus, minimum focus distance 15 cm (~6 in) | Fixed focus, minimum focus distance 45 cm (~18 in) | Manual focus, minimum focus distance 15 cm (~6 in) | Fixed focus, minimum focus distance 45 cm (~18 in)             |  |  |
| <b>Wireless connectivity</b>                   | Yes, to PC, iPhone® and iPad® (iOS 4s and later), Android™ 4.3 and up, and WiFi to LAN (where available)  |  |  |  |  |  |  |  |
| Fluke Connect® app compatible                  | Yes*, connect your camera to your smartphone, and images taken automatically upload to the Fluke Connect® app for saving and sharing  |  |  |  |  |  |  |  |
| Fluke Connect® Assets optional software        | Yes*, assign images to assets and create work orders. Easily compare measurement types—whether mechanical, electrical or infrared images—in one location  |  |  |  |  |  |  |  |
| Fluke Connect® Instant Upload                  | Yes*, connect your camera to your building's WiFi network, and images taken automatically upload to the Fluke Connect® system for viewing on your smartphone or PC  |  |  |  |  |  |  |  |
| Fluke Connect® tool compatible                 | Yes*, connects wirelessly to select Fluke Connect® enabled tools and displays measurements on camera screen. Five simultaneous connections supported  |  |  |  |  |  |  |  |
| <b>IR-Fusion® technology</b>                   | Yes, adds the context of the visible details to your infrared image   |  |  |  |  |  |  | —  |
| AutoBlend™ mode                                | 100 %, 75 %, 50 %, 25 % IR plus full visible on camera; continuously variable in software   |  |  |  |  |  | 100 %, 50 % IR and full visible on camera; continuously variable in software | 100 % IR and full visible on camera; continuously variable in software |
| Picture-In-Picture (PIP)                       | 100 %, 75 %, 50 %, 25 % IR; continuously variable in software   |  |  |  |  |  | Not available on camera; continuously variable in software                   |  |
| Ruggedized display                             | 3.5 inch (landscape) 320 x 240 LCD  |  |  |  |  |  |  |  |
| Rugged, ergonomic design for one-handed use    | Yes   |  |  |  |  |  |  |  |
| Thermal sensitivity (NETD)                     | ≤ 0.08 °C at 30 °C target temp (80 mK)  |  |  |  | ≤ 0.09 °C at 30 °C target temp (90 mK)             |  | ≤ 0.10 °C at 30 °C target temp (100 mK)                                      | ≤ 0.15 °C at 30 °C target temp (150 mK)                                |
| <b>Level and span</b>                          | Smooth auto and manual scaling  |  |  |  |  |  |  |  |
| Fast auto toggle between manual and auto modes | Yes   |  |  |  |  |  |  |  |
| Fast auto-rescale in manual mode               | Yes   |  |  |  |  |  |  |  |
| Minimum span (in manual mode)                  | 2.5 °C (4.5 °F)   |  |  |  |  |  |  |  |
| Minimum span (in auto mode)                    | 5 °C (9.0 °F)   |  |  |  |  |  |  |  |
| Built-in digital camera (visible light)        | 5MP   |  |  |  |  |  |  |  |
| Frame rate                                     | 30 Hz or 9 Hz versions  | 9 Hz   | 30 Hz or 9 Hz versions                             | 9 Hz   | 30 Hz or 9 Hz versions                             | 9 Hz   |  |  |
| Laser pointer                                  | Yes   |  |  |  |  |  |  |  |
| <b>Data storage and image capture</b>          |   |  |  |  |  |  |  |  |
| Extensive memory options                       | Internal 4GB memory and 4GB micro SD card   |  |  |  |  | Internal 4GB memory (includes slot for optional micro SD card) |  |  |
| Image capture, review, save mechanism          | One-handed image capture, review, and save capability   |  |  |  |  |  |  |  |
| Image file formats                             | Non-radiometric (.bmp) or (.jpeg) or fully-radiometric (.is2); No analysis software required for non-radiometric (.bmp, .jpg) files   |  |  |  |  |  |  |  |
| Memory review                                  | Dedicated memory view button for quick access to stored images; thumbnail and full screen review  |  |  |  |  |  |  |  |
| Software                                       | SmartView® full analysis and reporting software and Fluke Connect® system*  |  |  |  |  |  |  |  |
| Export file formats with SmartView® software   | Bitmap (.bmp), GIF, JPEG, PNG, TIFF   |  |  |  |  |  |  |  |
| Voice annotation                               | 60 seconds maximum recording time per image; reviewable playback on camera; Bluetooth headset required (sold separately)  |  |  |  |  |  | —  |  |
| IR-PhotoNotes™                                 | Yes (3 images)  |  | Yes (1 image)                                      |  | —  |  |  |  |
| Video recording                                | Standard and radiometric  |  |  |  | —  |  |  |  |
| Video file formats                             | Non-radiometric (MPEG - encoded .avi) and fully radiometric (.is3)  |  |  |  | —  |  |  |  |
| Streaming video (remote display)               | Yes, see the live stream of the camera display on your PC or smartphone. Via USB, WiFi hotspot, or WiFi network to SmartView® software on a PC; or via WiFi hotspot to the Fluke Connect® app on a smartphone |  |  |  | —  |  |  |  |
| Auto capture (temperature and interval)        | Yes   |  |  |  |  |  |  |  |

\*Fluke Connect® system is not available in all countries. Please check availability with your authorized Fluke distributor.





## Detailed specifications

|   | TiS75   | TiS65/TiS60 | TiS55/TiS50   | TiS45/TiS40  | TiS20                               | TiS10  |
|---|---|-------------|---|--|-------------------------------------|--|
| <b>Battery</b>  |   |             |   |  |                                     |  |
| Batteries (field-replaceable, rechargeable)                 | Two lithium ion smart battery pack with five-segment LED display to show charge level   |             | One lithium ion smart battery pack with five-segment LED display to show charge level                   |  |                                     |  |
| Battery life  | Four+ hours continuous use per battery pack   |             |   |  |                                     |  |
| Battery charge time   | 2.5 hours to full charge  |             |   |  |                                     |  |
| Battery charging system                                     | Two-bay battery charger or in-imager charging. Optional 12 V automotive charging adapter  |             | In-imager charging. Optional two-bay battery charger or 12v automotive charging adapter sold separately |  |                                     |  |
| AC operation  | AC operation with included power supply (100 V AC to 240 V AC, 50/60 Hz)  |             |   |  |                                     |  |
| Power saving  | User selectable sleep and power off modes   |             |   |  |                                     |  |
| <b>Temperature measurement</b>                              |   |             |   |  |                                     |  |
| Temperature measurement range (not calibrated below -10 °C) | -20 °C to +550 °C (-4 °F to 1022 °F)  |             | -20 °C to +450 °C (-4 °F to 842 °F)   |  | -20 °C to +330 °C (-4 °F to 662 °F) |  |
| Accuracy  | ± 2 °C or 2 % (at 25 °C nominal, whichever is greater)  |             |   |  |                                     |  |
| On-screen emissivity correction                             | Yes (both value and table)  |             |   |  |                                     |  |
| On-screen reflected background temperature compensation     | Yes   |             |   |  |                                     |  |
| On-screen transmission correction                           | Yes   | -           | Yes   | -  | Yes                                 | -  |
| <b>Color palettes</b>                                       |   |             |   |  |                                     |  |
| Standard palettes   | 8: Ironbow, Blue-Red, High Contrast, Amber, Amber Inverted, Hot Metal, Grayscale, Grayscale Inverted  |             |   | 7: Ironbow, Blue-Red, High Contrast, Amber, Hot Metal, Grayscale, Grayscale Inverted |                                     | 6: Ironbow, Blue-Red, High Contrast, Amber, Hot Metal, Grayscale |
| Ultra Contrast™ palettes                                    | 8: Ironbow Ultra, Blue-Red Ultra, High Contrast Ultra, Amber Ultra, Amber Inverted Ultra, Hot Metal Ultra, Grayscale Ultra, Grayscale Inverted Ultra                                      |             |   | -  |                                     | 3: Ironbow, Blue-Red, Grayscale                                  |
| <b>General specifications</b>                               |   |             |   |  |                                     |  |
| Color alarms (temperature alarms)                           | High temperature, low temperature, isotherms (within range)   |             |   | High temperature, low temperature  |                                     | -  |
| Infrared spectral band                                      | 7.5 µm to 14 µm   |             |   |  |                                     |  |
| Operating temperature                                       | -10 °C to +50 °C (14 °F to 122 °F)  |             |   |  |                                     |  |
| Storage temperature   | -20 °C to +50 °C (-4 °F to 122 °F) without batteries  |             |   |  |                                     |  |
| Relative humidity   | 10% to 95%, non-condensing  |             |   |  |                                     |  |
| Center-point temperature measurement                        | Yes   |             |   |  |                                     |  |
| Spot temperature  | Hot and cold spot markers   |             |   |  |                                     |  |
| User-definable spot markers                                 | 3   | 2           | 1   | 1  | 1                                   | -  |
| Center box  | Expandable contractible measurement box with MIN-MAX-AVG temp display   |             |   | -  |                                     | -  |
| Safety standards  | EN 61010-1: CAT none, pollution degree 2, EN 60825-1: Class 2, EN 60529, EN 62133 (lithium battery)   |             |   |  |                                     |  |
| Electromagnetic compatibility                               | EN 61326-1:2006, EN 55011: Class A, EN 61000-4-2, EN 61000-4-3  |             |   |  |                                     |  |
| C Tick  | IEC/EN 61326-1  |             |   |  |                                     |  |
| US FCC  | EN61326-1; FCC Part 5, EN 55011: Class A, EN 61000-4-2  |             |   |  |                                     |  |
| Vibration and Shock   | 2G, IEC 68-2-6 and 25G, IEC 68-2-29   |             |   |  |                                     |  |
| Drop  | Engineered to withstand 2 meter (6.5 feet) drop   |             |   |  |                                     |  |
| Size (H x W x L)  | 26.7 cm x 10.1 cm x 14.5 cm (10.5 in x 4.0 in x 5.7 in)   |             |   |  |                                     |  |
| Weight (battery included)                                   | Fixed Focus .72 kg (1.6 lb), Manual focus .77 kg (1.7 lb)   |             |   |  |                                     |  |
| Enclosure rating  | IP54 (protected against dust, limited ingress; protection against water spray from all directions)  |             |   |  |                                     |  |
| Warranty  | Two-years (standard), extended warranties are available   |             |   |  |                                     |  |
| Recommended calibration cycle                               | Two-years (assumes normal operation and normal aging)   |             |   |  |                                     |  |
| Supported languages   | Czech, Dutch, English, Finnish, French, German, Hungarian, Italian, Japanese, Korean, Polish, Portuguese, Russian, Simplified Chinese, Spanish, Swedish, Traditional Chinese, and Turkish |             |   |  |                                     |  |

\*Fluke Connect® system is not available in all countries. Please check availability with your authorized Fluke distributor.



**Ordering information**

- FLK-TiS75 30HZ Infrared Camera
- FLK-TiS75 9HZ Infrared Camera
- FLK-TiS65 30HZ Infrared Camera
- FLK-TiS65 9HZ Infrared Camera
- FLK-TiS60 9HZ Infrared Camera
- FLK-TiS55 30HZ Infrared Camera
- FLK-TiS55 9HZ Infrared Camera
- FLK-TiS50 9HZ Infrared Camera
- FLK-TiS45 30HZ Infrared Camera
- FLK-TiS45 9HZ Infrared Camera
- FLK-TiS40 9HZ Infrared Camera
- FLK-TiS20 9HZ Infrared Camera
- FLK-TiS10 9HZ Infrared Camera

**Included**

Infrared camera; AC power supply (including universal AC adapters); two-bay smart battery charger (TiS75, TiS65, TiS60 only); rugged lithium ion smart battery (TiS75, TiS65/60 include 2 each—other models 1 each); USB cable; 4 GB micro SD card (TiS75, TiS65/60, TiS55/50, TiS45 only); rugged, hard carrying case (TiS75, TiS65/60, TiS55/50; TiS45/40); soft transport bag; adjustable hand strap (TiS75, TiS65/60, TiS55/50, TiS45/40). **Available by free download:** SmartView® desktop software and user manual.

**Optional accessories**

- FLK-BLUETOOTH Bluetooth Headset
- FLK-TI-TRIPOD3 Tripod Mounting Accessory
- BOOK-ITP Introduction to Thermography Principles Book
- FLK-TI-SBP3 Additional Smart Battery
- FLK-TI-SBC3B Smart Battery Charger
- TI-CAR CHARGER Car Charger

**Fluke Connect® modules**

- FLK-a3000 FC AC Current Clamp Module
- FLK-a3001 FC iFlex™ AC Current Clamp Module
- FLK-a3002 FC AC/DC Current Module
- FLK-a3003 FC DC Wireless Clamp
- FLK-a3004 FC DC Wireless Clamp
- FLK-v3000 FC AC Voltage Module
- FLK-v3001 FC DC Voltage Module
- FLK-t3000 FC K-Type Temperature Module

RF connection time (binding time) may take up to 1 minute.

**The Professional Series**

For a high performance, feature rich thermal imager that produces consistently in-focus images with a touch of a button EVERY SINGLE TIME, consider the Professional Series with LaserSharp® Auto Focus.



**Preventive maintenance simplified. Rework eliminated.**

Save time and improve the reliability of your maintenance data by wirelessly syncing measurements using the Fluke Connect® system.

- Eliminate data-entry errors by saving measurements directly from the tool and associating them with the work order, report or asset record.
- Maximize uptime and make confident maintenance decisions with data you can trust and trace.
- Access baseline, historical and current measurements by asset.
- Move away from clipboards, notebooks and multiple spreadsheets with a wireless one-step measurement transfer.
- Share your measurement data using ShareLive™ video calls and emails.
- The Fluke Performance Series is part of a growing system of connected test tools and equipment maintenance software. Visit the website to learn more about the Fluke Connect® system.

Find out more at [flukeconnect.com](http://flukeconnect.com)



All trademarks are the property of their respective owners. WiFi or cellular service required to share data. Smartphone, wireless service and data plan not included with purchase. First 5 GB of storage is free. Phone support details can be viewed at [fluke.com/phones](http://fluke.com/phones).

**Smart phone wireless service and data plan not included with purchase. Fluke Connect is not available in all countries.**

**Fluke.** *Keeping your world up and running.®*

**Fluke Corporation**  
PO Box 9090, Everett, WA 98206 U.S.A.

**Fluke Europe B.V.**  
PO Box 1186, 5602 BD Eindhoven, The Netherlands

Modification of this document is not permitted without written permission from Fluke Corporation.

**For more information call:**  
In the U.S.A. (800) 443-5853 or Fax (425) 446-5116  
In Europe/M-East/Africa +31 (0)40 267 5100 or Fax +31 (0)40 267 5222  
In Canada (800)-36-FLUKE or Fax (905) 890-6866  
From other countries +1 (425) 446-5500 or Fax +1 (425) 446-5116  
Web access: <http://www.fluke.com>

©2016 Fluke Corporation. Specifications subject to change without notice. 4/2016 6005299e-en

